

# Business 20 (BI 20) Traffic and Safety Study

## Public Forum #1



January 19, 2005



# Introductions

- Lee Engineering – Dallas, Texas
  - Traffic and Transportation Engineering
  - Jody Short, P.E., Vice President
  - Kelly Parma, P.E.
  - Leslie Drake, E.I.T.
- Technical Advisory Committee
  - Mike McAnally, TxDOT Odessa District
  - Kelli Williams, TxDOT Odessa District
  - Hal Feldman, City of Odessa
  - Gary Saunders, City of Midland



# Presentation Outline

- Goals of the Traffic Study
- Perceived Issues on BI 20 Corridor
- Important Project Dates
- Existing Traffic Conditions (example)
- Project Website
- Open House



# Goals of the Traffic Study

- Address operational and safety issues which currently exist along the BI 20 corridor;
- Identify Short-Term Improvements
  - < 24 months
- Identify Long-Term Improvements
  - > 24 months



# Perceived Issues Along BI 20

- Complicated Intersections
- Two-Way Frontage Road
- Inconsistent Traffic Control
- Inconsistent Use of Frontage Road
- High Speeds on Frontage Road
- Access Management Concerns
- Others? (We welcome your input on the sheets provided!)



# Project Timeline

- Today, January 19, 2005:
  - First Public Forum
  - Gather Input – Issues, Problems, Safety or Operational Concerns
- April, 2005 (approx)
  - Second Public Forum
  - Lee Engineering to Present Recommendations for Short-Term and Long-Term Improvements
- May, 2005 (approx)
  - Third and Final Public Forum
  - Lee Engineering to Present Final Report and Recommendations



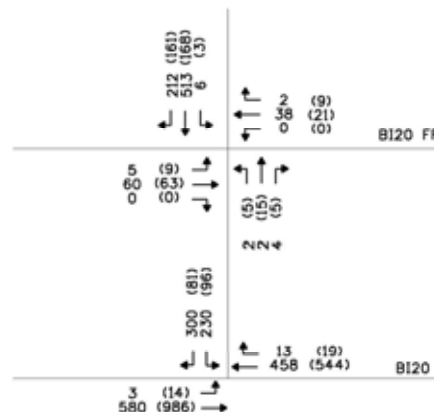
# Existing Conditions (example)

Loop 250 (W Ramp)

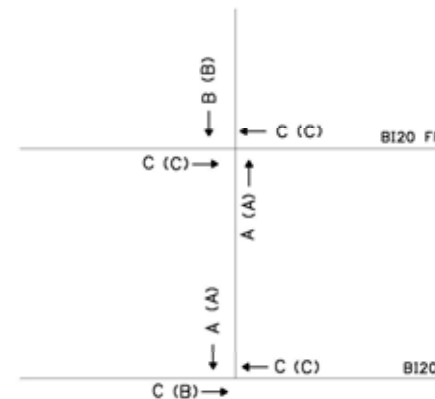


NOT TO SCALE

2004 Traffic Volumes  
(Peak Hour)



Levels of Service  
(Measure of Delay)



Total Number of Accidents: 11\*

\* Accident data available from 1999-2003.



LEGEND: XX (XX) - AM Peak Hour Data (PM Peak Hour Data)



LEE ENGINEERING

# Project Website

- [www.business20trafficstudy.com](http://www.business20trafficstudy.com)
- E-mail:
  - [b20study@lee-eng.com](mailto:b20study@lee-eng.com)



# Open House

- Aerial photograph provided as a reference
- Please feel free to take copies of the provided handouts
- Please fill out comment cards with any concerns or issues you have regarding the operation and/or safety of the BI 20 corridor
- Thank you for coming!